

Investment in tools and resources in primary care

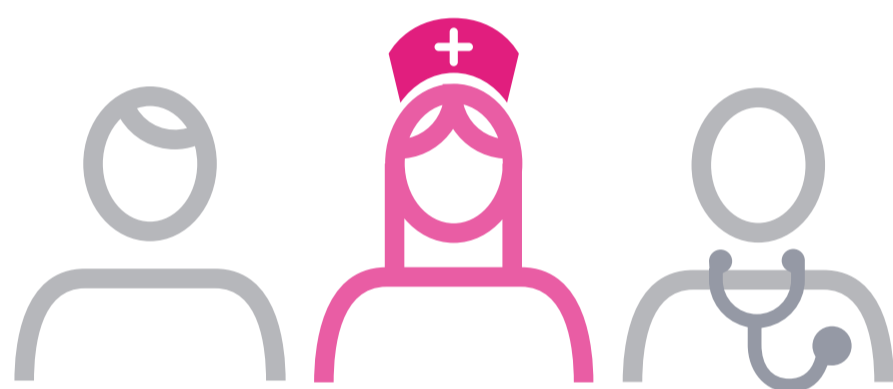


Health care systems are often poorly equipped

to provide HF patients with the quality care they need outside hospital.

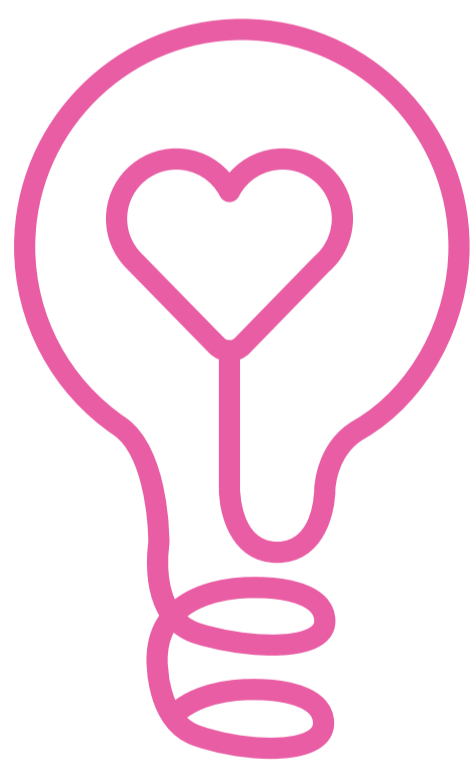
HF specialist nurses may provide a key link

between professionals and ongoing support to patients



Innovative approaches to encourage self-care

(e.g. patient monitoring) may help keep HF patients out of hospital



Patient monitoring tools may also help

give patients a sense of control over their condition.

